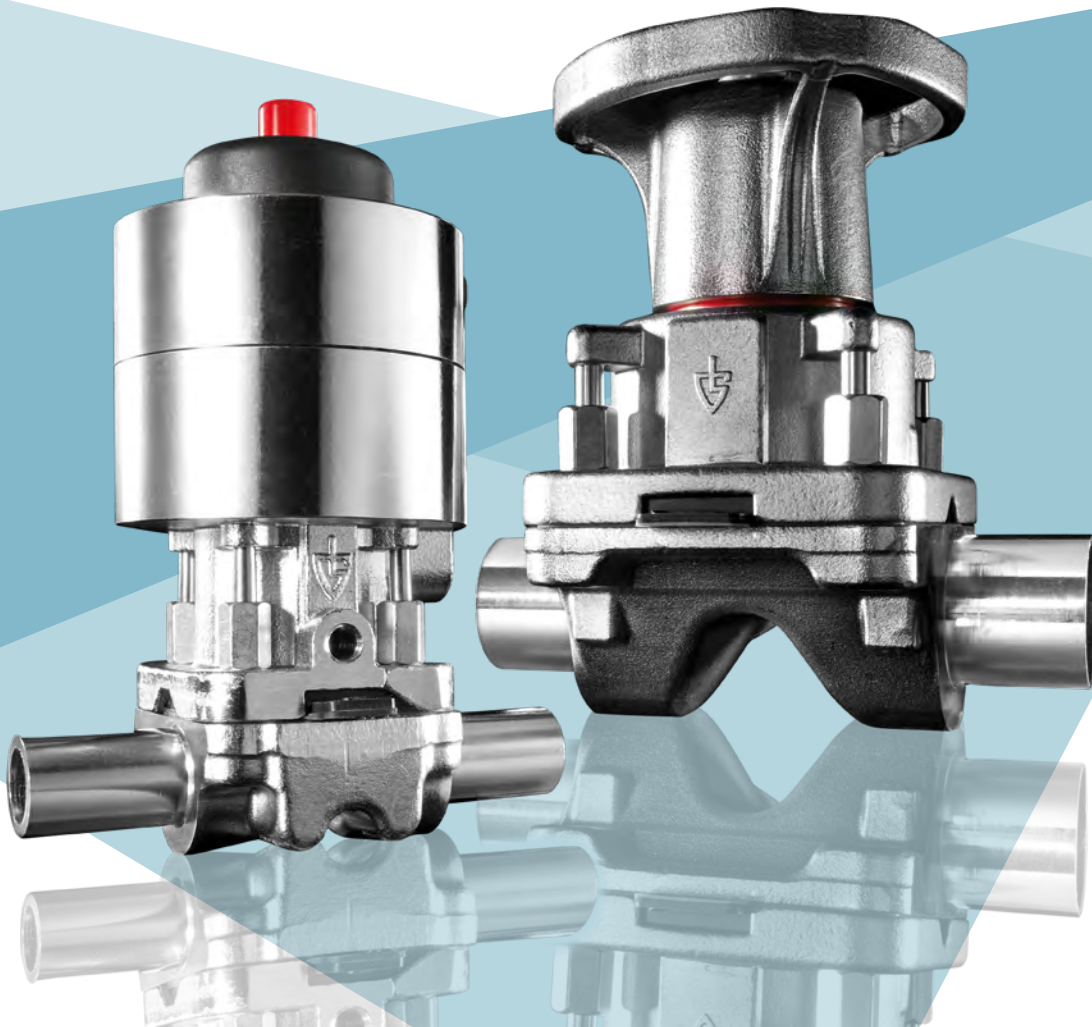




GOETZE Diaphragm Valves.

Quality in every detail.





Diaphragm valve experts Jochen Hofmann and Thomas Müller

GOETZE – EXPERIENCE MEETS INNOVATIVE STRENGTH

↘ For over 75 years, we at GOETZE have been developing and producing valve technology 'Made in Germany'. As a fourth-generation family business, we combine tradition with a spirit of innovation – and have thus developed into an **internationally respected partner for high-performance valves**.

- Highest quality through state-of-the-art manufacturing
- Technical diversity for a wide range of applications
- Reliable service and partnership-based cooperation
- Solutions for temperature ranges from -270 °C to +400 °C
- Pressure ranges from 0.2 to 1500 bar

We know how to handle pressure!



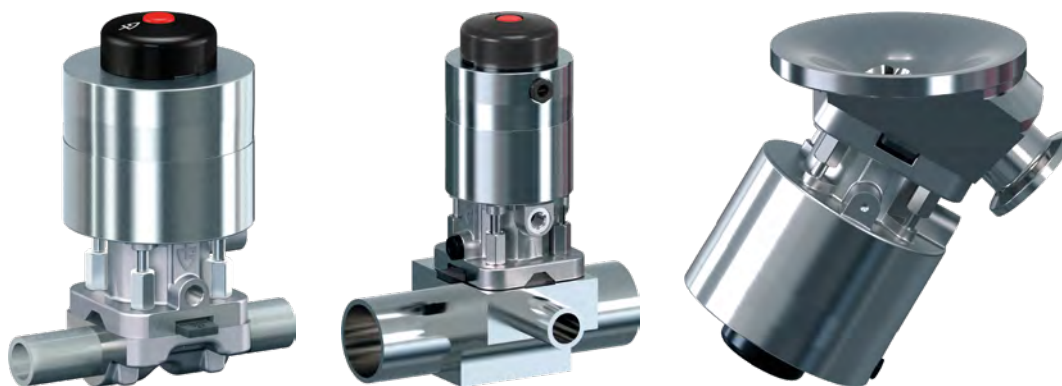


FROM CLASSIC SAFETY VALVES TO CLEAN APPLICATIONS – OUR JOURNEY

↘ Our decades of experience in valve technology form the basis for high-precision solutions in demanding fields of application. Whether in industries, technical gases, cryogenic applications or in the aseptic 'clean' segment – we understand the requirements.

With clean technology for production processes that place the highest demands on hygiene and cleanability, we are now entering the new field of diaphragm valves. In doing so, we are relying on the same principle that makes us strong:

Competence, precision and partnership-based advice – modular valve solutions that are precisely tailored to your needs.



YOUR PROCESSES ARE UNIQUE – SO ARE OUR SOLUTIONS.

↘ Our new series of diaphragm valves is the result of a consistent focus on the requirements of the industry.

- **Patented sealing technology**
Reliable even after sterilisation.
- **Simple fitting**
Defined stop
- **Fast installation**
No rotation angle required, optimal drainage at all times.
- **Easy to maintain**
No loose parts, smooth processes.
- **Tested to the extreme**
Actuators tested with 1 million switching cycles. Diaphragms tested according to ASME standard, plus endurance test under saturated steam conditions.



A large industrial facility, likely a pharmaceutical or biotechnology plant, with a worker in a cleanroom environment. The worker is wearing a blue protective suit, a hairnet, and a face mask, and is operating a piece of equipment. The background shows complex piping and machinery.

FOR THE HIGHEST DEMANDS IN SENSITIVE APPLICATIONS

➤ Pharmaceuticals, biotechnology, life sciences, food & beverage and cosmetics – our diaphragm valves are at home wherever purity and process reliability are top priorities.

Our specialised team of experts combines expertise from various industries to develop solutions that combine technical precision with aseptic design.





ONE SYSTEM – NUMEROUS POSSIBILITIES

↘ Our diaphragm valves follow a clear principle:
Maximum flexibility thanks to a consistent modular system. Different housing designs – from straight-through valves and T-variants to tank bottom valves – form the basis. These are complemented by a wide selection of connections, nozzles and sealing diaphragms that can be precisely tailored to the respective application.

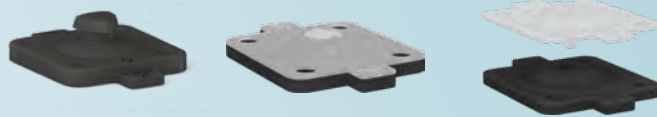
Manual handwheels are available for actuation, as are compact pneumatic actuators in various designs. This allows individual components to be combined to create a customisable valve that fits perfectly into any system.

OUR VARIABLE MODULAR SYSTEM

Valve body according to application*



Various shut-off diaphragms*



Connectors and fittings of your choice*



Manual or pneumatic actuators*



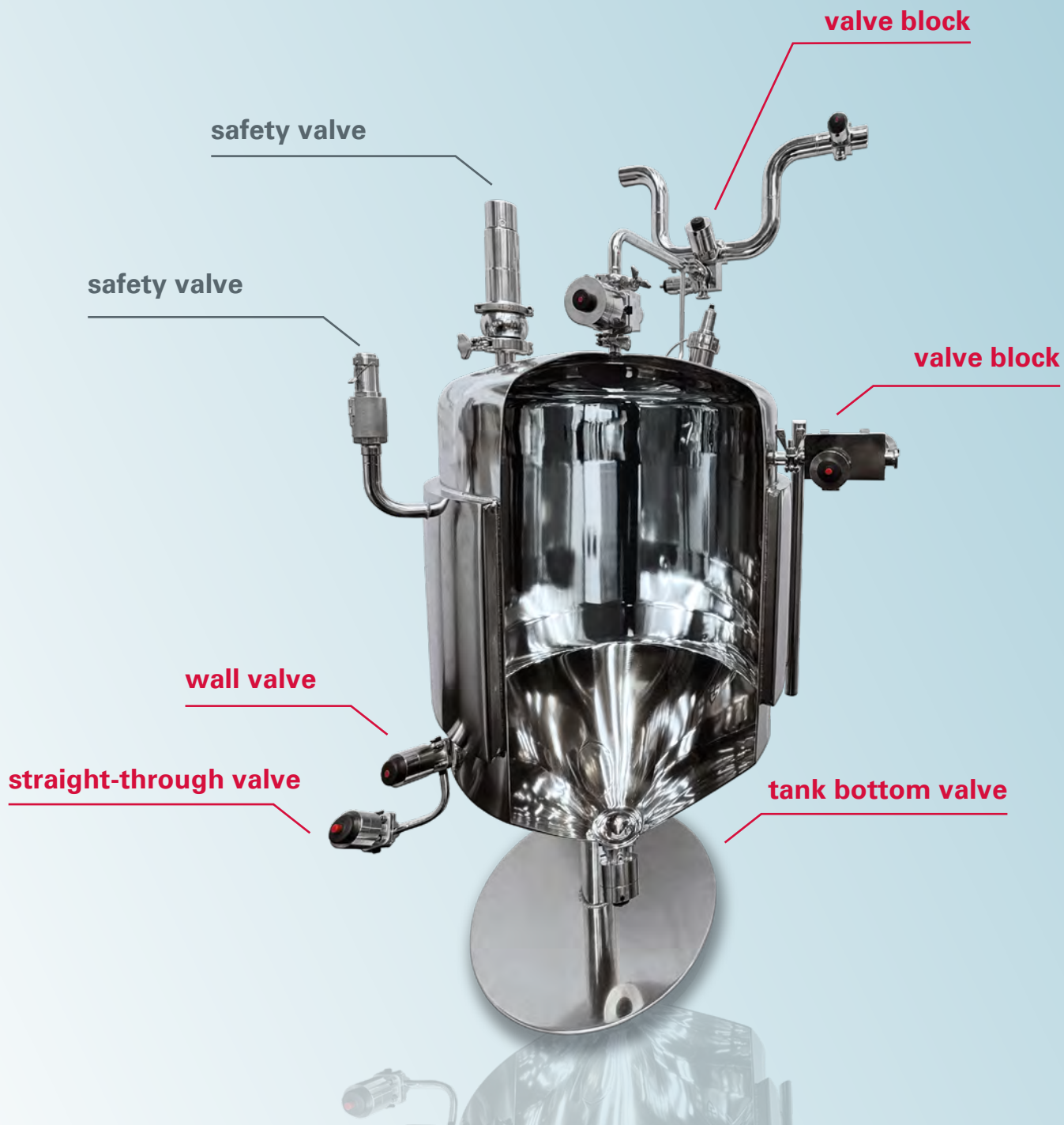
*For further options, please refer to the technical documentation.

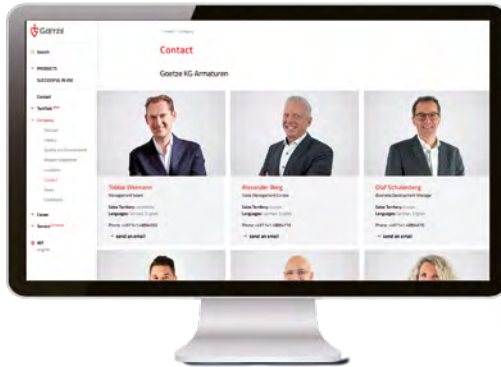


UNCOMPROMISING PLANT OPERATION

↘ Our diaphragm valves are designed to integrate seamlessly into complex systems. Whether in tanks, pipes or containers, the optimised geometry ensures complete self-draining in all installation positions. There is no need for time-consuming adjustment or a precisely defined angle of rotation.

In operation, this not only means increased process reliability, but also significant cost savings: cleaning cycles run more efficiently, downtimes are minimised and system availability increases.





YOUR DIRECT LINE TO GOETZE – SERVICE THAT MAKES PROCESSES SAFE

➤ Personal expertise right from the start

Our team of diaphragm valve experts will guide you through every step of the process, from selection to implementation. Your direct contacts are available at any time to answer technical questions, assist with configurations and address industry-specific requirements.

Customer service
representatives



➤ One click for all the information you need

On our landing page, you will find all relevant information and documents relating to diaphragm valves – clearly structured, up to date and available at any time.

Diaphragm valves on
the GOETZE website





TECHNICAL KNOWLEDGE – DIGITALLY AVAILABLE AT ANY TIME

- We provide you with a comprehensive package of documentation for working with our diaphragm valves. This includes compact **data sheets** with all relevant key figures, **mounting instructions** that explain the installation step by step, and a **technical documentation** with over 80 pages of detailed technical information.

Data sheet
straight-through valve



Data sheet
T-valve



Data sheet
tank bottom valve





www.goetze-group.com | info@goetze.de | +49 7141 4889460