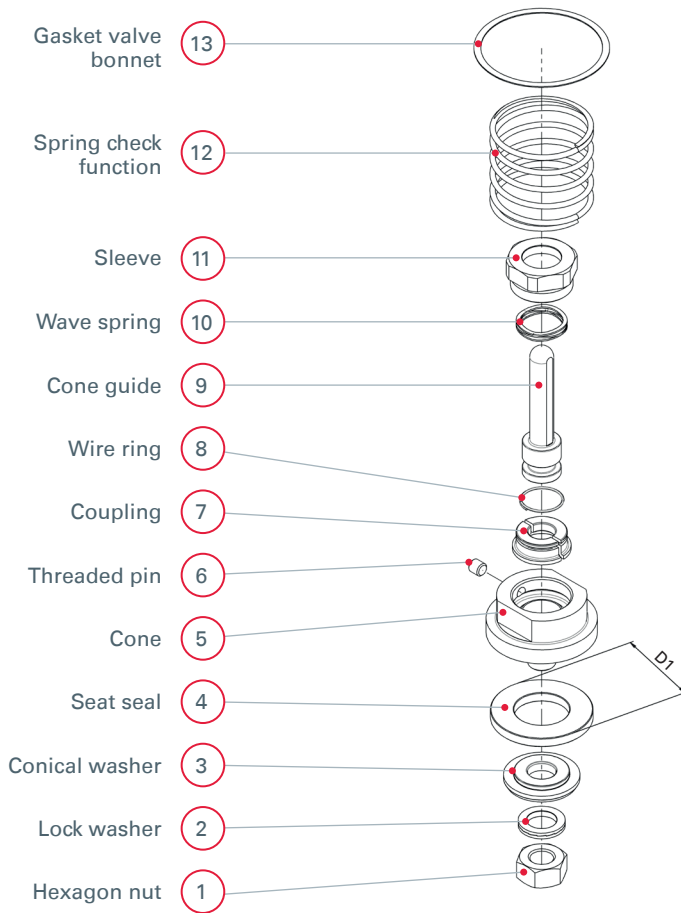


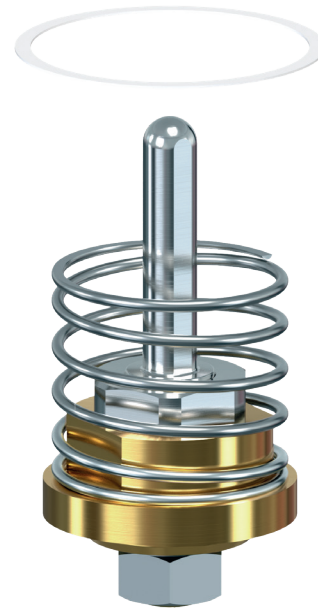
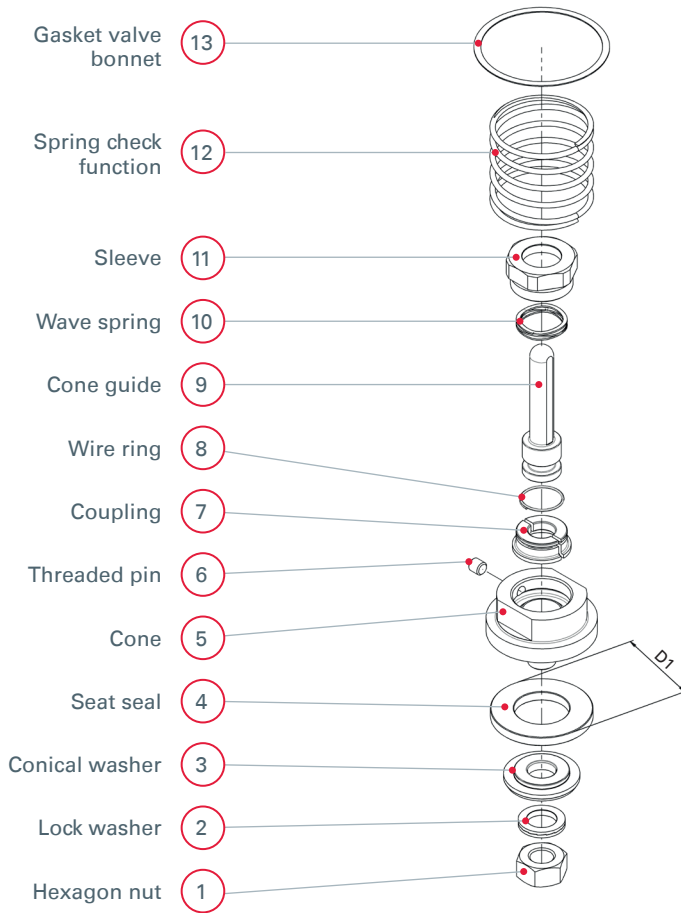
→ Overview of spare parts 2142 |
Valve cone complete with non-return function



■ SPARE PARTS VALVE CONE COMPLETE WITH NON-RETURN FUNCTION 2142

Pos.	Description	Material	Nominal diameter	D1 [mm]	Item No.
1	Hexagon nut	1.4404 / 316 L			
2	Lock washer	1.4404 / 316 L			
3	Conical washer	1.4404 / 316 L			
4	Seat seal	PTFE TF 4215			
5	Cone	1.4404 / 316 L	DN 10	17	E2140.010.21
6	Threaded pin	1.4301 / 304	DN 15	22	E2140.015.21
7	Coupling	1.4404 / 316 L	DN 20	26	E2140.020.21
8	Wire ring	1.4310 / 302	DN 25	29,5	E2140.025.21
9	Cone guide	1.4404 / 316 L	DN 32	38	E2140.032.21
10	Wave spring	1.4401 / 316	DN 40	43	E2140.040.21
11	Sleeve	1.4404 / 316 L	DN 50	52	E2140.050.21
12	Spring check function	1.4310 / 302			
13	Gasket valve bonnet	PTFE TFM 1600			

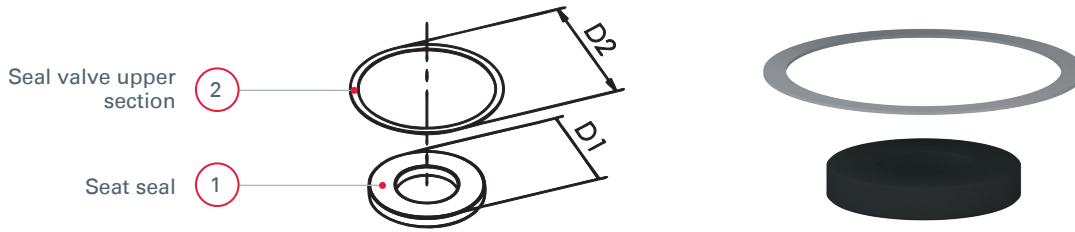
→ Overview of spare parts 2182 |
Valve cone complete with non-return function



■ SPARE PARTS VALVE CONE COMPLETE WITH NON-RETURN FUNCTION 2182

Pos.	Description	Material	Nominal diameter	D1 [mm]	Item No.
1	Hexagon nut	1.4404 / 316 L			
2	Lock washer	1.4404 / 316 L			
3	Conical washer	1.4404 / 316 L			
4	Seat seal	PTFE TF 4215			
5	Cone	1.4404 / 316 L	DN 10	17	E2180.010.21
6	Threaded pin	1.4301 / 304	DN 15	22	E2180.015.21
7	Coupling	1.4404 / 316 L	DN 20	26	E2180.020.21
8	Wire ring	1.4310 / 302	DN 25	29,5	E2180.025.21
9	Cone guide	1.4404 / 316 L	DN 32	38	E2180.032.21
10	Wave spring	1.4401 / 316	DN 40	43	E2180.040.21
11	Sleeve	1.4404 / 316 L	DN 50	52	E2180.050.21
12	Spring check function	1.4310 / 302			
13	Gasket valve bonnet	PTFE TFM 1600			

→ Overview of spare parts 2142/2182 | Sealing set complete

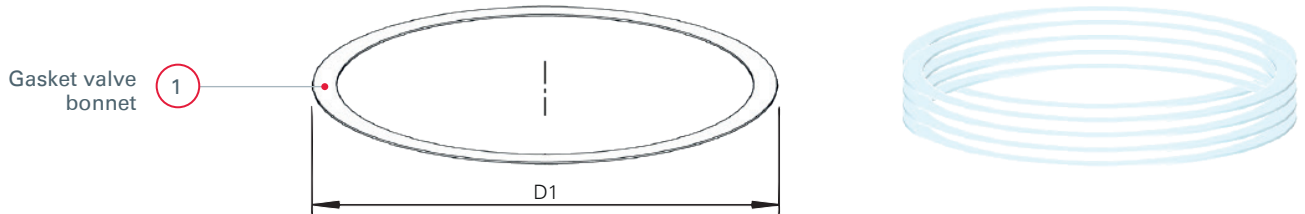


■ COMPONENTS SEALING SET COMPLETE 2142 / 2182

No.	Description	Material	Nominal diameter	D1	D2	Item No.
1	Seat seal	PTFE TF 4215	DN 10	17 mm	28 mm	E2142.010.35
			DN 15	22 mm	30 mm	E2142.015.35
			DN 20	26 mm	38 mm	E2142.020.35
			DN 25	29,5 mm	39 mm	E2142.025.35
			DN 32 ¹	38 mm	50 mm	E2142.032.35
2	Seal valve upper section	PTFE TFM 1600	DN 40 ¹	43 mm	54 mm	E2142.040.35
			DN 50	52 mm	63 mm	E2142.050.35

¹When selecting the nominal size, please note that the actuator size does not always correspond to the DN, especially with DN32 and DN40 (see D1 + D2)!

→ Overview of spare parts
2140/2142/2143/2180/2182/2183 |
Gasket package valve bonnet



■ GASKET PACKAGE VALVE BONNET 2140/2142/2143/2180/2182/2183

Pos.	Description	Material	Nominal diameter	D1 [mm]	Number of items	Item No.
1	Gasket valve bonnet	PTFE TFM 1600	DN 10	28	5	E2140.010.38
			DN 15	30		E2140.015.38
			DN 20	38		E2140.020.38
			DN 25	39		E2140.025.38
			DN 32 ¹	50		E2140.032.38
			DN 40 ¹	54		E2140.040.38
			DN 50	63		E2140.050.38

¹ Please note that the nominal diameter does not always correspond to the drive size, especially for DN32 and DN40 (see D1)!